

The Gift of Flora

November 2, 2022

A GCA Flower Show



Presented by

Cherokee Garden Club

Member of The Garden Club of America

3820 Northside Drive, Atlanta, Georgia
30305

Open to the public, 3:00-5:00 p.m.

The purpose of The Garden Club of America is to stimulate the knowledge and love of gardening; to share the advantage of association by means of educational meetings, conferences, correspondence, and publications; and to restore, improve and protect the quality of the environment through educational programs and action in the fields of conservation and civic improvement.

The purpose of a flower show is threefold: to set standards of artistic and horticultural excellence; to broaden knowledge of horticulture, floral design, conservation, photography, and other related areas; and to share the beauty of a show with fellow club members and with the public. *The Garden Club of America Flower and Judging Guide, 2021 edition.*

TABLE OF CONTENTS

TIMETABLE FOR EXHIBITORS	4
FLOWER SHOW COMMITTEE	5
EDUCATIONAL COMPONENT	6
GCA RULES	6-7
GENERAL INFORMATION	7-8
DIVISION I	
Floral Design Guidelines	9
Floral Design Classes	10-12
DIVISION II	
Horticulture Guidelines	13-14
Horticulture Classes	15-17
DIVISION III	
Photography Guidelines	18-19
Photography Classes	20-21
DIVISION V	
Educational Guidelines	22
Educational Exhibit	22
GCA FLOWER SHOW AWARDS	23-24
SPONSORING CLUB AWARDS	25
REGISTRATION FORMS	26-29
DIRECTIONS TO THE SHOW	30

TIMETABLE FOR EXHIBITORS

May 2, 2022	Horticulture - Six-month ownership deadline
August 2, 2022	Horticulture - Three-month ownership deadline
August 10, 2022	Registration opens for all divisions
October 1, 2022	Floral Design, Horticulture (Classes 40-41), and Photography registration deadline
October 5, 2022	Photography printed submission deadline
October 15, 2022	Photography entries passed
Tuesday, November 1, 2022	
12:00 - 4:00 pm	Floral Design and Horticulture entries accepted and passed
Wednesday, November 2, 2022	
8:00 - 9:00 am	Floral designs Entries completed and passed Horticulture Entries accepted and passed
10:00 am	Judges briefing
10:15 am - 12:15 pm	Judging
12:00 - 12:30 pm	Special Awards Judging
12:30 pm	Judges Lunch and Evaluation
3:00 - 5:00 pm	Show open to the public
5:30 - 7:30 pm	Celebration WRAP PARTY
7:30 - 8:30 pm	Entries may be removed
Thursday November 3, 2022	
8:30 - 10:00 am	All entries must be removed Break down Show

FLOWER SHOW COMMITTEE

Chairs	Nancy Jamison Helen Bost	nanjamison@gmail.com helenmattoxpost@gmail.com
President	Caye Oglesby	cayeo6@gmail.com
Division I Floral Design	Ann DuPre Linda Harris	anncdupre@gmail.com hbhiii@aol.com
Division II Horticulture	Kim Nagy Anne Marino	kimberlynagy@gmail.com annehmarino@gmail.com
Division III Photography	Yvonne Wade Newell Harbin	yvance@mindspring.com newellharbin@me.com
Division V Education	Yvonne Wade Newell Harbin	yvance@mindspring.com newellharbin@me.com
Awards	Frazer Fiveash Annie Offen	frazerfiveash@yahoo.com swoffen@comcast.net
Hotel/Transportation	Ann Barrett Jennifer Thompson	annbarrett487@gmail.com jdiversiperio@aol.com
Judges and Clerks	Adelaide Burton Barbara Sparkes	adelaideburton@bellsouth.net sparkesb@gmail.com
Judges Hospitality	Felicia Huger Caroline Tucker	fhuger@me.com cmtucker@bellsouth.net
Passing	Virginia Almand Ellen Beard	valmand@bellsouth.net ellenmbeard@comcast.net
Photographer	Sally Seeds	sally.seeds@mac.com
Printing and Signage	Carrie Lanier Leila Pratt	celanier@gmail.com leliaschwabpratt@gmail.com
Registration	see Division Chairs	
Schedule	Nancy Jamison Helen Bost	nanjamison@gmail.com helenmattoxpost@gmail.com
Staging	Amy Wilbanks Isabel Pope	ahwilbanks@yahoo.com isabelpoppe@aol.com
Wrap Party	Maggie Wallace Anna Blitch	maggieknoxwallace@gmail.com ablitch79@gmail.com

EDUCATIONAL COMPONENT

Division V will be the Educational Component of this Flower Show. It will be an Exhibit entitled Historical Symbolism of Flowers. We will display garden statuary, paintings and hand made Tussie Mussies along with historical information about the symbolism and hidden meanings in floral images.

Statement of Intent: **Historical Symbolism of Flowers:** From the ancient Greeks to the Victorians, statuary, floral imagery and displays often held hidden meanings. Examples, from art works and statuary of the Ancients to the simple nosegay or Tussie Mussie of the Victorian era, will illustrate these messages hidden in “plain sight”.

GCA RULES

1. Please carefully read and follow GCA Flower Show Rules, General Information, and Division Guidelines. All rules as stated in *The Garden Club of America Flower Show and Judging Guide* (FS & JG), October 2021 edition, shall apply.

2. All plant material must be correctly identified with the botanical and common names, if possible. Accepted references for nomenclature are:

Missouri Botanical Garden Plant Finder at

<https://www.missouribotanicalgarden.org/plantfinder/plantfindersearch.aspx>

Royal Horticultural Society - Find a Plant at <https://www.rhs.org.uk/plants/search-Form>

3. The Garden Club of America expects all exhibitors to be aware of the need to promote conservation of endangered and threatened plants. Plants collected in the wild and listed by the Georgia Natural Heritage Program may not be exhibited in any flower show sponsored by a GCA club. Cultivated plant material listed by Georgia’s Natural Heritage Program may be exhibited if accompanied by a typed card stating that it has not been collected from the wild or that it was collected out-of-state and giving information concerning its cultural requirements and methods of propagation. Natural Heritage Program lists of endangered plant material will be available before and during the show from the division chairmen and are available online at <https://plants.usda.gov/home/rarity>.

4. Plant material showing evidence of insects or disease must be removed immediately from the exhibition area. This rule will be enforced at any time during the show, whenever the problem is identified.

5. All entries in the Floral Design and Horticulture Divisions must include fresh and/or dried plant material. Fresh plant material must be in water or conditioned in such a way as to remain in pristine form while on exhibition. An entry not maintained in show condition may have its award removed. Entries in Photography are required to include plant material.

6. Locally invasive plants, diseased plant material, artificial plant material, live animals (including fish), taxidermy, natural birds' nests, feathers of any kind, and protected sea life, including coral, are not permitted. The use of natural shells is strongly not permitted.
<https://plants.usda.gov/home/noxiousInvasiveSearch>

GENERAL INFORMATION

1. Entries are open to all GCA club members, including Provisionals, and professionals in their disciplines, to members of other garden clubs, to the public, to novices, spouses, etc.

2. It is extremely important that all designs are the original work of the designer(s). While the use of various techniques and components in the design may be inspired by other designs, the application of the techniques and components and the artistic concept to the design must be original. Artistic integrity is of utmost importance.

3. Registration is required for all classes in Floral Design and Photography Divisions and Horticulture Classes 40-41. Registration forms are provided at the back of the schedule. Classes will be filled in the order registration forms are received according to the postmark/email date and time.

4. Only one entry per exhibitor is encouraged in Floral Design and Photography Divisions. Exceptions may be made if needed to fill a class.

5. Entering in a show constitutes permission to use images of the submitted content in all GCA channels of communication.

6. While The Garden Club of America and Cherokee Garden Club along with Mr/Mrs Chris Shoen will exercise due caution in safeguarding exhibits, responsibility for damage, loss, or personal injury cannot be assumed.

7. Any clarification or change in the rules, as originally stated in the schedule, shall be communicated promptly in writing by the division chairman to all exhibitors in the class and, at the show, to the judges and to the passing committee.

8. An Entry Card must accompany each entry. Entry Cards will be available at the show, on the GCA website, and upon request from the division chairmen, in advance of the show. Information required on the entry card must be completed in black waterproof medium.

9. The passing committee must pass each entry before an exhibitor may leave the show area. The passing committee reserves the right to refuse any entry that does not conform to the rules of the schedule. The exhibitor has the option of correcting the entry if time permits. If not corrected, the entry cannot be judged, but may remain in place, marked "For Exhibit Only" with a brief, constructively worded statement explaining why it was not judged. The judges may not disqualify any entry passed by the passing committee unless evidence of insect infestation or disease is identified.

10. Once an entry is passed, the exhibitor(s) must immediately leave the show floor. The only exception will be flower show committee members who have entered and been passed according to the timetable. A passed entry may not be touched again by the exhibitor until after judging and then only to carry out necessary maintenance.

11. Only participating judges and clerks will be allowed on the show floor during judging. Flower Show Chairmen and division chairman should remain nearby but off the show floor until needed.

12. All containers must be inconspicuously labeled with the exhibitor's name.

13. A novice is an individual exhibitor who has not won a first-place ribbon or a GCA Special Award in the division entered at a GCA Flower Show, GCA Major Flower Show, or Sanctioned Non-GCA Major Flower Show. An exhibitor winning a first-place ribbon in a GCA Flower Show is still considered a novice in a GCA Major Flower Show, or in a Sanctioned Non-GCA Major Flower Show, or in another division of any flower show. In addition, an exhibitor who has won a first- place ribbon or Special Award in a GCA Major Flower Show or Sanctioned Non-GCA Major Flower Show is no longer a novice in any level of GCA Flower Shows in the division won. Only individual novice exhibitors are eligible to receive the GCA Novice Awards or the Sandra Baylor Novice Floral Design Award. A novice exhibitor will be identified on the entry card, following the initial judging.

14. A Statement of Intent is required for all Floral Design Exhibits and must be submitted at the time of passing. A statement of intent is required for all Photography Exhibits and should be mailed with the Photograph and Entry Card. The statement must be no more than 25 words, typed or printed in black waterproof medium on a 4" x 6" white unlined card.

15. All exhibits must remain in place and in show condition until 7:30 pm November 2, 2022.

DIVISION I

FLORAL DESIGN GUIDELINES

1. Please carefully read and follow the GCA Rules, General Information, and Timetable for Exhibitors.
2. Advance registration for all classes is required by October 1, 2022.
3. An exhibitor may submit only one entry per class but may enter more than one class. The exhibitor(s) under whose name(s) the entry has been registered must create and complete the design. All participants must be listed on the Entry Card. Only listed exhibitors and show personnel may be on the show floor at the time of entry.
4. No more than two exhibitors may execute a design.
5. If forced to withdraw, an exhibitor must notify the Division Chairs and find a substitute unless there is a waiting list for the class.
6. **It is extremely important that all designs are the original work of the designer(s). While the use of various techniques and components in the design may be inspired by other designs, the application of the techniques and components and the artistic concept of the design must be original. Artistic integrity is of utmost importance.**
7. Designs may be executed off-site and brought to the show completed.
8. All entries must include fresh and/or dried plant material. Fresh plant material must be in water or conditioned in such a way as to remain in pristine form while on exhibition. Rooted plant material is allowed provided no soil is attached. An entry not maintained in show condition may have its award removed. No artificial plant material may be used.
9. Mechanics should not be visible unless they are an integral part of the design.
10. Anything not prohibited in the GCA Rules, Floral Design Division Guidelines, or individual class descriptions is permitted.
11. Although permitted, the use of cut fruits and vegetables is discouraged and should be undertaken only with proper treatment to prevent spoilage and insect contamination.
12. Judging will be based on the principles of design: balance, contrast, dominance, proportion, rhythm, and scale, and the elements of design: light, space, line, form, color, texture, pattern, and size. Creativity is important, as are distinction, conformance to and interpretation of the class, and schedule.
13. Pedestals may not be moved or enlarged. Floral Designs have no height restrictions. Accessories are permitted.
14. The walls are painted in Farrow & Ball "Matchstick".
15. Questions regarding specific class requirements may be directed to the Division Chairs.

DIVISION I

FLORAL DESIGN CLASSES

Class 1 *A Toast to Tradition* 4 Entries

A Traditional Mass design using all fresh flowers, plants, fruits and/or vegetables. Staged on a dark gray wood pedestal 39” high with a 24” square top. The Design may not exceed 15” from the center of the pedestal in any direction. Viewed from 3 sides.

Educational note: Traditional Mass is a design style composed of a profusion of flowers and plant material of various forms and sizes arranged in an oval, triangular or fan shape; a closed silhouette having more solids than voids.

FS & JG, Book 5, Glossary of Terms, 2021 edition

Scale of points by which Class will be judged

Design	40
Color Harmony	25
Distinction	20
Conformance	<u>15</u>
Total	100

FS & JG, Book 4, Pocket Guide, 2021 edition

Class 2 *Just a Small Gift* 5 Entries

A miniature design using fresh and/or dried plant material staged in a niche. Niche measures 8” wide x 8” high x 6” deep and will be staged at 52” high on raised pedestals, niches and pedestals will be painted in Benjamin Moore “Cheating Heart”. Viewed from the front only.

Educational note: Miniature Design is a diminutive design not more than five inches in height, width, and depth. *FS & JG, Book 5, Glossary of Terms, 2021 edition.*

Scale of Points by which Class will be judged

Design	30
Scale/Proportion	25
Creativity	15
Conformance	10
Distinction	10
Interpretation	<u>10</u>
Total	100

FS & JG, Book 4, Pocket Guide, 2021 edition

Class 3 *The Gift of Line*

4 Entries

A Contemporary Line design using only fresh plant material staged on a dark gray wood pedestal 39” high with a 24” square top. The Design may not exceed 15” from the center of the pedestal in any direction. Viewed from 3 sides.

Educational note: Contemporary/Modern Line: designs are bold and dramatic designs which may have more than one point of emergence of the plant material. Components may emphasize contrasts of color, texture, and line. Main direction may be straight or curvilinear, vertical, horizontal, diagonal and/or radial. *FS & JG, Book 5, Glossary of Terms, 2021 edition*

Scale of Points by which Class will be judged

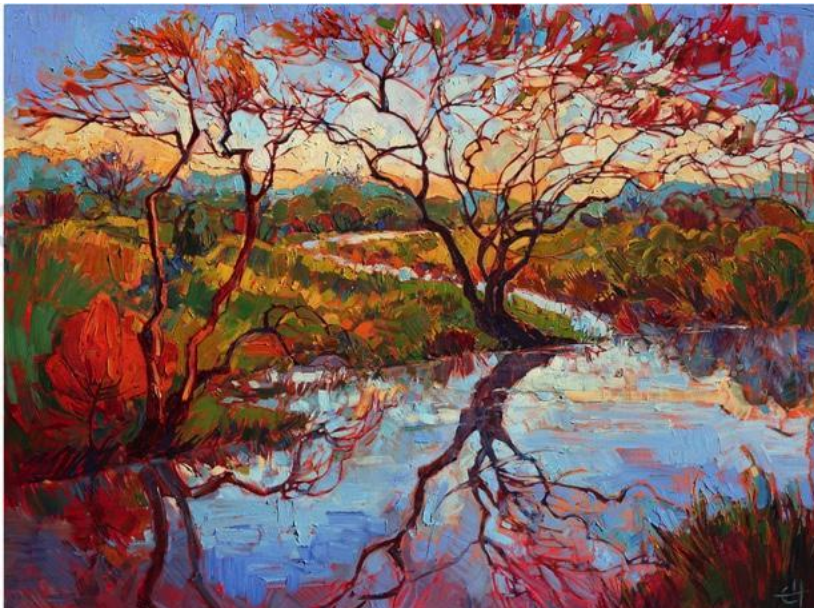
Design	35
Creativity	20
Interpretation	20
Distinction	15
Conformance	<u>10</u>
Total	100

FS & JG, Book 4, Pocket Guide, 2021 edition

Class 4 *The Gift of Inspiration*

4 Entries

Create a design interpreting the painting, “Madrona Marsh”, by Erin Hanson, using fresh and or dried plant material. Design to be staged on a dark gray wood pedestal 39” high with a 24” square top. The design may not exceed 20” from the center of the pedestal in any direction. Viewed from 3 sides. A copy of the Painting will be displayed near the entries.



Educational Note: Interpretive design has components selected and organized to portray a theme, idea, mood, or atmosphere; not a design style. *FS & JG, Book 5, Glossary of Terms, 2021 edition*

Scale of Points by which Class will be judged

Design	35
Creativity	20
Interpretation	20
Distinction	15
Conformance	<u>10</u>
Total	100

FS & JG, Book 4, Pocket Guide, 2021

DIVISION II

HORTICULTURE GUIDELINES

1. Please read carefully and follow the Rules, General Information and Timetable for Exhibitors.
2. An exhibitor may submit multiple entries per class, provided each is a different species or cultivar.
3. Entries must have been owned and grown by the exhibitor for a minimum of 3 months (August 2, 2022), unless otherwise stated in the schedule.
4. Entries eligible for the **Catherine Beattie Medal** and/or the **Clarissa Willemsen Horticultural Propagation Award** must have been in the possession of the exhibitor for at least six months (May 2, 2022) and will be identified on the Entry Card.
5. All rooted entries propagated by the exhibitor must be identified with the details of the method and relevant date(s) on an accompanying Propagation Card. This card is a separate white 4" x 6" unlined index card giving dates and details of propagation. Propagation Cards must be printed or completed in black waterproof medium. These entries will be eligible for the **Clarissa Willemsen Horticulture Propagation Award**.
6. Mats, stands, saucers, stakes, ties, etc. are not allowed.
7. Classes may be subdivided and entries moved and/or reclassified at the discretion of the Horticulture committee and/or the Judges.
8. Containers are measured at the diameter or the diagonal of the widest point on the inside of the rim at the soil line.
9. One Key Card (diagram or plant list) is required when multiple species or cultivars are exhibited in the same container and/or propagation information is applicable. A Key Card must be a 4" x 6" white unlined card completed in black waterproof medium. A 4" x 6" photograph with identifying numbers may be used.
10. Container grown plants should be exhibited in containers that are clean, unobtrusive & compatible with the exhibit. Terracotta clay pots are preferred. Other options include stone-like containers (Hypertufa), wire baskets and slatted orchid baskets. Disguised double potting and top dressing are permitted; top dressing must not float when watered. *Sphagnum* and Spanish moss are not permitted as top dressing. No hanging baskets or specimens are allowed. A white chalk X on the pot should define the back of the container.
11. An entry number dot will be affixed to all containers during the entry process to ensure an entry card, separated from the exhibit during staging, can be returned to the proper entry before judging.
12. Entry Cards can be found on the GCA Website <https://www.gcamerica.org> under Flower Show Committee. The cards must be printed or completed in a black waterproof medium (#2 pencil is acceptable) and must accompany each entry.

13. Invasive plants are not permitted. Georgia invasive plants are listed here:
<https://www.gaeppc.org/list/>.

14. Georgia native plants, available for **Cherokee Garden Club's Native Plant Award**, are well researched by the [University of Georgia Department of Horticulture](#) and by the following:

[Georgia Native Plant Society's Illustrated Plant List](#)
[Lady Bird Johnson Wildflower Center](#)
[Native Plants for Georgia Part I: Trees, Shrubs and Woody Vines](#)
[Native Plants for Georgia Part II: Ferns](#)
[Native Plants for Georgia Part III: Wildflowers](#)
[Native Plants for Georgia Part IV: Grasses and Sedges](#)

Native plants do not include non-natives that self-seed or naturalize in the landscape. Native specimens will be identified by a special sticker on the entry card for the **Cherokee Garden Club Native Plant Award**.

15. All entries must be removed on Thursday, November 3, 2022 by 10:00 am, at which time all entries will be discarded, if not removed by the exhibitor.

16. All Horticulture entries will be judged by the appropriate scale of points listed in the *FS & JG, Book 4, pages 30-38, 2021 edition*.

DIVISION II HORTICULTURE CLASSES

SECTION A: CUT SPECIMENS: owned by exhibitor at least five months

Classes 1–7 Annuals & Biennials:

Happy Gifts

One stem, branch, or leaf not to exceed 24” in length from the lip of the container to the tip of the stem. Cut specimens will be displayed in glass containers with wedging material (compostable cling wrap) provided by the committee. No foliage may be under water. At least one leaf must be attached to the stem.

BLOOMING

1. *Helianthus annuus*, Sunflower
2. *Tagetes*, Marigold
3. *Verbena*
4. Other Blooming Annuals & Biennials

FOLIAGE

5. *Brassica*, Kale
6. *Coleus*
7. Other Foliage Annuals

Classes 8-18 Perennials:

The Gift of Serenity

BLOOMING: One blooming stem – At least one leaf must be attached to the stem.

8. *Achillea*, Yarrow
9. *Anemone*
10. *Rudbeckia*, Black Eyed Susan
11. *Salvia*
12. *Sedum*
13. Other Blooming Perennials

FOLIAGE: One stem, branch or leaf.

14. Grass, Sedge or Rush
15. Fern
16. *Hosta*
17. *Trillium*
18. Other Foliage Perennials

Classes 19-23 Flowering or Fruiting Shrubs, Trees & Woody Ornamentals

The Gift of Harvest

19. *Callicarpa americana*, Beautyberry
20. *Camellia*
21. Conifer
22. *Ilex*, Holly

23. Other Flowering or Fruiting Shrubs, Trees & Woody Ornamentals

Classes 24-27 Shrubs, Trees and Other Woody Ornamentals *The Gift of Vibrance*

FOLIAGE

- 24. Shrub
- 25. Tree, Broadleaf
- 26. Tree, Conifer
- 27. Other Foliage Shrubs, Trees, & Woody Ornamentals

Classes 28-30 Climbers and Vines *The Gift of Connections*

- 28. Flowering Vine
- 29. Foliage Vine
- 30. Fruiting Vine

SECTION B: CONTAINER-GROWN PLANTS:

A container may contain more than one rooted plant of the same species or cultivar, unless noted otherwise. A container may not exceed 12” in diameter/diagonal unless otherwise noted. Disguised double potting is permitted.

Classes 31-37 Containers *The Housewarming Gift*

- 31. *Begonia* – In Bloom
- 32. Orchid – In Bloom
- 33. Cactus
- 34. Fern
- 35. Succulent (Other than Cacti)
- 36. Other Blooming Containers
- 37. Other Foliage Containers

Classes 38-39 Propagation Containers *The Gift of New Life*

A plant or plants of the same species or cultivar propagated by the exhibitor in a container not to exceed 18” in diameter/diagonal. Propagation dates and details are required on a Propagation Card. Length of ownership suspended. For added interest a mother plant photograph may be displayed. These two classes are an educational component of the flower show.

- 38. Grown from Seed
- 39. Grown from Air layering, Cutting, Grafting, Division, Leaf Cutting, Rhizome Division or Other Method.

Propagation Scale of Points:

Cultural Perfection	40
Difficulty of Propagation	20
Maturity	20

Suitable Key Card	10
Distinction	<u>10</u>
Total	100

FS & JG, Book 4, Pocket Guide, 2021 edition

SECTION C: COLLECTIONS

Classes 40-41 Collections

Creative Gifts

40. A collection of cut foliage, branches and/or flowers from the exhibitor's garden arranged in a clear glass container provided by the exhibitor. Displayed for cultural perfection that is artfully arranged. Finished arrangement not to exceed 24" in width and depth.. No height restrictions. Key Card required. Entries are limited to the first four registrations received.

Scale of Points by which Class will be judged

Cultural Perfection	40
Design	30
Diversity	20
Suitable Key Card	<u>10</u>
Total	100

FS & JG, Book 4, Pocket Guide, 2021 edition

41. Troughs-: A collection of 3 or more rooted species or cultivars in a trough constructed in a workshop by a Cherokee Garden Club exhibitor not to exceed 24" in diameter/diagonal. Three-month ownership not required. Key Card required. Entries are limited to the first six registrations received.

Scale of Points by which Class will be judged

Cultural Perfection	40
Scale, Balance, & Design	35
Suitability & Compatibility	15
Suitable Key Card	<u>10</u>
Total	100

FS & JG, Book 4, Pocket Guide, 2021 edition

SECTION D: PAR

Exuberant Gifts

Class 42

An exhibit of exceptional horticultural merit, which does not qualify for entry elsewhere in the Horticultural Division. Entries in the PAR class must have been owned and grown by the exhibitor for a minimum of one year. Cut specimens not permitted. Containers may not exceed 24" in diameter/diagonal.

DIVISION III

PHOTOGRAPHY GUIDELINES

1. Please carefully read and follow the GCA Rules, General Information, and Timetable for Exhibitors.
2. An exhibitor may submit only one entry per class. Advance registration is required by October 1, 2022
3. If forced to withdraw, an exhibitor must notify the Division Chairs and find a substitute unless there is a waiting list for the class.
4. A photograph previously entered in any GCA, GCA Major, Sanctioned Non-GCA Major Flower Show, or a GCA *Focus* online contest may not be entered again even with slight alterations and/or reprinting. The same photograph may only be entered in one show at a time.
5. Each photograph must be the work of the exhibitor under whose name it is registered. In manipulated photographs, any added imagery must be the work of the exhibitor. Non-representational commercial overlays and textures are allowed. Matting, mounting, and printing may be done professionally. All photographs must be 2-dimensional and printed on paper unless otherwise specified. All post-production must be done before the photograph is printed.
6. Any editing at any stage must be the work of the exhibitor. This includes enhancement for color or clarity, removal of a part of the image, combining images, or distorting the original subject.
7. Photography entries are limited to subjects consistent with The Garden Club of America interests such as horticulture, floral design, gardens/landscapes, conservation, and the environment, historic preservation, civic improvement, and the natural world.
8. Photographs must be mounted on black foam core and may not be over-matted. Dimensions of the entry must be 14" x 16". Glass and framing are not permitted.
9. Each entry must have the entry form affixed to the back of the photograph mounting with the exhibitor's name, garden club, zone, email, address, phone number and class entered. The top of the photograph must be indicated.
10. There are 2 cards required for each Photograph entered. The Registration Card, found at the end of this schedule, must be submitted before October 1, 2022. The Entry Card, also at the end of the schedule, is to be printed and mounted on the back of the photograph before mailing by the exhibitor. Identification of plant material on the entry card is not required but encouraged whenever possible.
11. A title or brief statement of intent is required on the Entry Card.
12. Photographs will be displayed on an easel.

13. **Photographs must be received no later than October 15, 2022.** Send photographs to:

Newell Harbin
3066 Habersham Road
Atlanta, GA 30305

Your registration will be confirmed and receipt of your photograph will be acknowledged. For information, contact Newell Harbin, newellharbin@me.com.

14. Photographs will be passed by the photography committee to verify that class specifications have been met. If a photograph is not passed, the exhibitor will be notified and allowed, if time permits, to send a replacement photograph.

15. Only the photography committee may reclassify an entry, but only with the permission of the exhibitor. The photography committee and/or the judges may subdivide a class.

16. Only appropriate images of a child or children should be submitted to, passed and exhibited in The Photography Division and published in *Focus*.

17. If a photograph is to be returned, the exhibitor must provide a self-addressed return label, envelope or mailing box, and postage and packing material. Any award received will be noted on the back of the mount before it is returned. If a photograph will not be returned, to receive the comment card and any award won, include a self-addressed and stamped envelope. Any award received will be noted on the back of the mount before it is returned.

Recommended for Mailing:

Use two 15" x 19" bubble wrap envelopes or a reusable mailing box. (Smaller envelopes are too tight to easily get images in and out with their various wrappings.) Secure your mounted or matted image between 2 suitable pieces of foam core (this is very light) or non-bendable cardboard, which will be reused for return. Place wrapped image and folded self-addressed return envelope inside the mailing envelope.

Postage: Please include a \$12 check (payable to Cherokee Garden Club) to cover return postage and handling. If return envelope and postage are not included, it will be assumed that the image will not be returned

18. A follow-up letter or email will be sent to all photography exhibitors listing the results of the Photography Division.

DIVISION III PHOTOGRAPHY CLASSES

Class 1 *The Gift of Meaning*

4 entries

Color – Creative Technique

A Plant Photograph that has been manipulated to convey the meaning, or emotion, associated with a person, place or thing. Statement of Intent to include the meaning/emotion evoked by the person, place or thing.

Educational Note: Creative Techniques: The use of manipulation or alteration in any stage of the photographic process to achieve an effect that the original subject is no longer discernible or reflective of reality. All representational images in a manipulated or creative technique photo must be the work of the photographer. Non-representational enhancements such as the addition of purchased textures are allowed.

FS & JG, Book 5: Glossary of Terms, 2021 edition

Scale of points for Creative Techniques

Creativity	30
Composition	20
Technical Skill	25
Conformance/Interpretation	10
Distinction	<u>15</u>
Total	100

FS & JG, Book 4, Pocket Guide, 2021 edition

Class 2 *The Gift of Closeness*

4 Entries

Black and White

A close-up image of a flower/flower part (blossom, stems, leaves or roots) that creates a pleasing design not instantly recognized (or read) as a flower/flower part.

Educational note: Close-up: A photo taken close to the subject or with a long focal-length lens to permit a close and detailed view of the object. The object fills most of the frame.

FS & JG, Book 5 Glossary of Terms, 2021 edition

Class 3 *The Gift of Discovery*

4 Entries

Color

A mobile phone photograph of an unexpected display of flowers or plants discovered on a walk, ride, or hike. No people in the photograph.

Class 4 *The Gift of Community*

4 Entries

Color

A photograph taken in an Olmsted designed/inspired park or neighborhood that illustrates the gift of “community” in Nature. Must include plants and people.

Scale of Points for Classes 2-4

Creativity	25
Composition	25
Technical Skill	20
Conformance/Interpretation	20
Distinction	<u>10</u>
Total	100

FS & JG, Book 4, Pocket Guide, 2021 edition

DIVISION V EDUCATION GUIDELINES for EXHIBIT

1. Please carefully read and follow the GCA Rules, General Information, and the Timetable for Exhibitors.
2. Write a Statement of Intent (approximately 50 words) for the Education Exhibit.
3. The exhibitor(s) under whose name(s) the entry has been registered must create and complete the design. No more than two exhibitors may execute the design. All participants must be listed. Only listed exhibitors and show personnel may be on the show floor at the time of entry.
4. May be constructed off site and brought to the show completed.
5. Mechanics may not be visible unless they are an integral part of the design.
6. Anything not prohibited in the GCA Rules, Education Division Guidelines, or individual class descriptions are permitted. Accessories are permitted.
7. Any fresh plant material must be in water or conditioned in such a manner as to remain fresh for the duration of the show.
8. A key card, diagram, or plant list, must be included with each part of the exhibit. If multiple species or cultivars are exhibited in the same container.

Education Exhibits Scale of Points

Educational Value	60
Staging	20
Creativity and distinction	<u>20</u>
Total	100

FS & JG Book 4: Pocket Guide, 2021 edition

DIVISION V EDUCATION EXHIBIT

This exhibit is the educational component of the flower show.

The Historical Symbolism of Flowers hidden in gardens and art.

The exhibit will include garden statuary and images of paintings along with written material that explains and illustrates the floral images and their hidden meanings. Hand made Tussie Mussies will be included to further illustrate the message that the wearer might be sending.

Statement of Intent: From the ancient Greeks to the Victorians, floral imagery and displays often held hidden meanings. Examples from statuary and artwork of the Ancients to the seemingly simple nosegay or Tussie Mussie of the Victorian era, will illustrate these messages that are “hidden in plain sight”.

GCA FLOWER SHOW AWARDS

GCA Flower Show Awards described below have been applied for and will be presented if merited.

Division I, Floral Design

Best in Show Floral Design is selected from first place winners in the division.

The Dorothy Vietor Munger Award may be awarded to members of The Garden Club of America clubs in competitive Floral Design classes at a GCA Flower Show. It is offered in recognition of creative work of outstanding beauty using predominantly fresh plant material. The design must have placed first, second, or third. Challenge class entries are not eligible. The award is not a substitute for Best in Show and will be given at the discretion of the judges.

The Harriet DeWaele Puckett Creativity Award may be awarded to members of GCA clubs or non-members in recognition of a uniquely skillful and creative response to an imaginative schedule in Floral Design. It will be given for an innovative and interpretive entry, which, although it abides by the principles of good design, goes beyond traditional period arrangement to whatever art form the exhibitor(s) chooses. The design must have placed first, second, or third in the Floral Design Division of a GCA Flower Show. An entry in any challenge class is not eligible to receive this award. The award is not a substitute for Best in Show and will be given at the discretion of the judges.

The Sandra Baylor Novice Floral Design Award may be given at a GCA Flower Show to an exhibitor who is a member of a GCA club and who has never won first place, or a GCA Special Award in the Floral Design Division of a GCA Flower Show, GCA Major Flower Show or Sanctioned Non-GCA Major Flower Show. It shall be awarded to an individual novice exhibitor for a unique and skillful response to the schedule. Novice entries placing first, second, or third in any competitive class, including challenge classes, are eligible for this award.

Division II, Horticulture

Best in Show Horticulture is selected from first place winners in the division.

The Catherine Beattie Medal may be awarded for a horticulture entry distinguished by its vibrancy, prime condition, and perfection of grooming. The exhibitor must have owned and grown the exhibit for at least six months. The medal may be awarded for a single plant, collection of plants, container garden, or cut specimen, but only if there is an exhibit worthy of the honor. It may be awarded to members of GCA clubs only; individual, joint, and club entries are eligible. The award should not be considered as a substitute for Best in Show. The medal may not be awarded to the same exhibit more than once; however, offspring of a Beattie winner are eligible to receive the award.

The GCA Novice Award in Horticulture may be awarded for an outstanding exhibit to a member of a GCA club who has never won first place or a GCA Special Award in the horticulture division in a GCA Flower Show, GCA Major Flower Show or Sanctioned non-GCA Major Flower Show. Novice entries placing first, second, or third are eligible for this award.

The Clarissa Willemsen Horticulture Propagation Award may be awarded for a horticulture entry distinguished by its prime condition, flawless grooming and difficulty of propagation. The entry must have been propagated and grown by the exhibitor for at least six months. This award may be given for a single rooted plant or a collection of rooted plants. The dates and method of propagation must be recorded on an accompanying propagation card. The entry must have placed first, second, or third at a GCA Flower Show. The award may not be given to the same exhibit more than once.

The Rosie Jones Horticulture Award may be presented to a horticulture entry of exceptional visual appeal that reflects the spirit of growing with joy and enthusiasm and inspires others to propagate, grow, show and share horticulture. An exhibit that has been propagated by the exhibitor will be given special consideration but propagation is not a requirement. Perfection, while always desirable, is not a primary criterion. This award celebrates the ineffable joy inherent in the beauty and pursuit of horticulture.

Division III, Photography

Best in Show Photography is selected from first place winners in the division.

The GCA Novice Award in Photography may be awarded for an outstanding exhibit to a member of a GCA club who has never won first place or a GCA Special Award in the photography division in a GCA Flower Show, GCA Major Flower Show or Sanctioned non-GCA Major Flower Show. Novice entries placing first, second, or third are eligible for this award.

The Photography Creativity Award may be awarded at a GCA Flower Show to a member of a GCA club in recognition of creative and technical excellence in response to the theme of the schedule. The entry must have placed first, second, or third.

Division V, Education

Awards: For Exhibit

The Ann Lyon Crammond Award may be presented at a GCA Flower Show to an outstanding educational exhibit, which best educates the public about gardens. Any educational exhibit, which increases the appreciation of any aspect of plants, gardens, or landscape design, may be considered for this award. The award may be given to GCA club members, member clubs, non-members or other organizations.

Education Award may be presented to an entry, class, division, or an entire show for an exhibit of exceptional merit which educates the public in keeping with the purpose statement of the GCA. This award may be given to a GCA Garden Club or a GCA Member.

Overall (Divisions I-V)

Judges' Commendation(s) may be given to an entry, class, section, special exhibit or other aspect of the show that is of exceptional merit.

Award of Appreciation may be given to thank an exhibitor or group for participation. The award may also be given to non-judged classes.

SPONSORING CLUB AWARDS

Cherokee Garden Club Best Use of Color: to an exhibit in the Floral Design Division displaying the most vibrant color combination.

Cherokee Garden Club Native Plant Award: to be awarded to an exhibit for a single plant/specimen, collection of plants, or container garden according to the Horticulture Rules defining a native plant. “Planting and preserving Georgia natives is the gift we give to future generations.”

Cherokee Garden Club Most Innovative Award: to an exhibit in any Division displaying exceptional creativity and “out of the box” thinking.

THE GIFT OF FLORA

DIVISION I Floral Design Registration Form

Please complete one Registration Form per entry. Registration Deadline: October 1, 2022

Send to: Ann DuPre
2341 Dellwood Drive
Atlanta, Georgia 30305

Email: anncdupre@gmail.com

Please print using block letters. Date: _____

Name: _____

Garden Club and Zone: _____

Address: _____

Tel: _____ Email: _____

Co-Exhibitor(s): _____

Class Number Class Title

1st Choice: _____

2nd Choice: _____

Novice? (individual exhibitor only) Yes ___ No ___

A novice is an individual exhibitor who has not won a first-place ribbon or a GCA Special Award in Floral Design in a GCA Flower Show, GCA Major Flower Show, or Sanctioned Non-GCA Major Flower Show.

.....
If your novice status changes before the date of this show, please notify the division chairman.
.....

THE GIFTS OF FLORA

DIVISION II Horticulture Registration Form

Registration is not required for cut specimen classes. Registration is required for Classes 40-41.

Please complete one Registration Form per entry. Registration Deadline: October 1, 2022

Send to: Kim Nagy
3211 Marne Drive
Atlanta, Georgia 30305

Email: kimberlynagy@gmail.com

Please print using block letters. Date: _____

Name: _____

Garden Club and Zone: _____

Address: _____

Tel: _____ Email: _____

Class Number Class Title

1st Choice: _____

2nd Choice: _____

Novice? Yes ___ No ___

A novice is an individual exhibitor who has not won a first-place ribbon or a GCA Special Award in Horticulture in a GCA Flower Show, GCA Major Flower Show, or Sanctioned Non GCA Major Flower Show. If your novice status changes before the date of this show, please notify the division chairman.

THE GIFTS OF FLORA

DIVISION III Photography Registration Form

Please complete one Registration Form per entry. Registration Deadline: October 1, 2022

Mail to: Yvonne Wade
550 Westover Drive
Atlanta Georgia 30305

Email: yvance@mindspring.com

Please include the following in the body of the email:

Date: _____

Name: _____

Garden Club and Zone: _____

Address: _____

Tel: _____ Email: _____

Class Number: _____ Class Title: _____

Novice? Yes ___ No ___

A novice is an individual exhibitor who has not won a first-place ribbon or a GCA Special Award in Photography in a GCA Flower Show, GCA Major Flower Show, or Sanctioned Non-GCA Major Flower Show. If your novice status changes before the date of this show, please notify the division chairman.

THE GIFTS OF FLORA

▲ TOP ▲ Photograph Entry Form ▲ TOP ▲

The following must be copied and affixed to the back of the photograph mounting when entry is mailed or submitted.

Photograph Entry Deadline: October 15, 2022

Please complete one Entry Form per photograph.

Send photograph to: Newell Harbin
3066 Habersham Road
Atlanta, Georgia 30305

Email: newellharbin@me.com

Class Entered: _____

Name: _____

Garden Club and Zone: _____

Email: _____

Address: _____

Tel: _____

Return postage and packaging have been provided. _____

Identifiable Plant Material (optional): _____

Title or brief statement (required): _____

Novice? Yes ____ No ____

A novice is an individual exhibitor who has not won a first-place ribbon or a GCA Special Award in Photography in a GCA Flower Show, GCA Major Flower Show, or Sanctioned Non-GCA Major Flower Show. If your novice status changes before the date of this show, please notify the division chairman.

DIRECTIONS TO THE FLOWER SHOW

From West Paces Ferry Road (westbound), turn right at the traffic light at Northside Drive. Proceed north on Northside Drive for just under 1 mile. The house on your left at 3820 Northside Drive is the Flower Show location. Immediately past the house is a traffic light at Blackland Road. Turn right at the traffic light onto Blackland, and please park on the right side of the street only.

From West Paces Ferry Road (eastbound), turn left at the traffic light at Northside Drive. Proceed north on Northside Drive for just under 1 mile. The house on your left at 3820 Northside Drive is the Flower Show location. Immediately past the house is a traffic light at Broadland Road. Turn right at the traffic light onto Broadland, and please park on the right side of the street only.

A uniformed Police Officer will be available to help you cross Northside Drive.

To drop off your entries, you may turn into the gravel drive immediately before the house drive. Briefly park, take in your entries, and then proceed to Blackland Road for parking for the show. You may then enter the Flower Show and begin your registration process. You may also utilize the home's driveway for dropping off entries. Please be mindful of others and your time, as many entries need to be brought into the show in the same time slots.